



1770 West Centennial Place, Addison, Illinois

Approved 2021/2022 Fiscal Year Budget

Our Vision

An agency of excellence, demonstrated by member partners working cooperatively with Board, staff and the community to enhance the quality of life for each individual.

Our Mission

To serve as an integral partner with our member park districts and villages to positively impact individuals with disabilities through diverse recreation opportunities and community services.

Our Core Values

Service with Compassion
Excellence and Quality
Integrity ♦ Commitment ♦ Fun

This page intentionally left blank.

Table of Contents

Board of Trustees.....	i
Mission and Vision	i
Administration	i
Agency Profile	iii
Executive Summary.....	1
Fund Balance.....	3
Operations Unrestricted Budget	5
Restricted Budget	15
Employee Service Data	17
Inclusion History	21
Supporting Data and Supplemental Information	23



This page intentionally left blank.

NEDSRA Board of Trustees

Chairman	Bruce Baum	Medinah Park District
Vice Chairman	Matthew Ellmann	Wood Dale Park District
	Jen Hermonson	Addison Park District
	Phyllis Schmidt.....	Bensenville Park District
	Michael Hixenbaugh	Butterfield Park District
	Keith Knautz.....	Village of Glendale Heights
	Maryfran Leno	Itasca Park District
	Paul Friedrichs	Lombard Park District
	Cathy Fallon	Oakbrook Terrace Park District
	Barb Cremin.....	Village of Schiller Park
	Greg Gola.....	Village of Villa Park

Vision

An agency of excellence, demonstrated by member partners working cooperatively with Board, staff and the community to enhance the quality of life for each individual.

Mission

To serve as an integral partner with our member park districts and villages to positively impact individuals with disabilities through diverse recreation opportunities and community services.

Our Core Values

Service with Compassion ♦ Excellence and Quality ♦ Integrity ♦ Commitment ♦ Fun

Administration

Executive Director.....	Rick Poole
Superintendent.....	Jerry Barton
Executive Assistant to the Director/HR Manager	Susan Martellotta
Marketing & Communications Manager	Kristen Seefurth

This page intentionally left blank.

NEDSRA General Information

History and Mission

Northeast DuPage Special Recreation Association (NEDSRA) is a cooperative of eight park districts and three villages in northeast DuPage and west Cook Counties. NEDSRA was formed in 1976 to combine resources and avoid duplication among the member agencies in the provision of recreation programs, services and events for people with disabilities. Annually, NEDSRA serves over 3,300 distinct individuals, which make up the over 7,400 registrations received. NEDSRA's primary mission is to serve as an integral partner with our member park districts and villages to positively impact individuals with disabilities through diverse recreation opportunities and community services. NEDSRA's main objective is to meet the unique social and recreation needs of individuals with disabilities, so they may increase their enjoyment of life and reach their highest level of independence, self-fulfillment and self-actualization.

Legal Authority and Governance

NEDSRA and its member partners were authorized to enter into a cooperative agreement by Section 8-10b of the Illinois Park District Code and Section 11-95-14 of the Illinois Municipal Code and the laws amendatory thereof and supplementary thereto, and by Article VII Section 10 of the 1970 Constitution of the State of Illinois. NEDSRA is governed by an eleven-member Board of Trustees and the day-to-day business operations are managed by an Executive Director as stipulated in its Articles of Agreement and Bylaws. The Board of Trustees consists of one representative, usually the Executive Director, from each member partner. Each member partner has one vote on all matters before the Board. NEDSRA has no tax levying authority and is dependent on the contributions from the member partners from their *Special Recreation Fund* (tax levy) and other non-tax revenues generated from fees, special events, donations and grants. The formula for member partner contributions is included in NEDSRA's Articles of Agreement.

The Board of Trustees establishes all major policies including, but not limited to: budgets, capital outlay, and long-range/strategic plans. The annual budget, with the capital plan and any related studies and plans, is presented to the Board of Trustees in April for review and action.

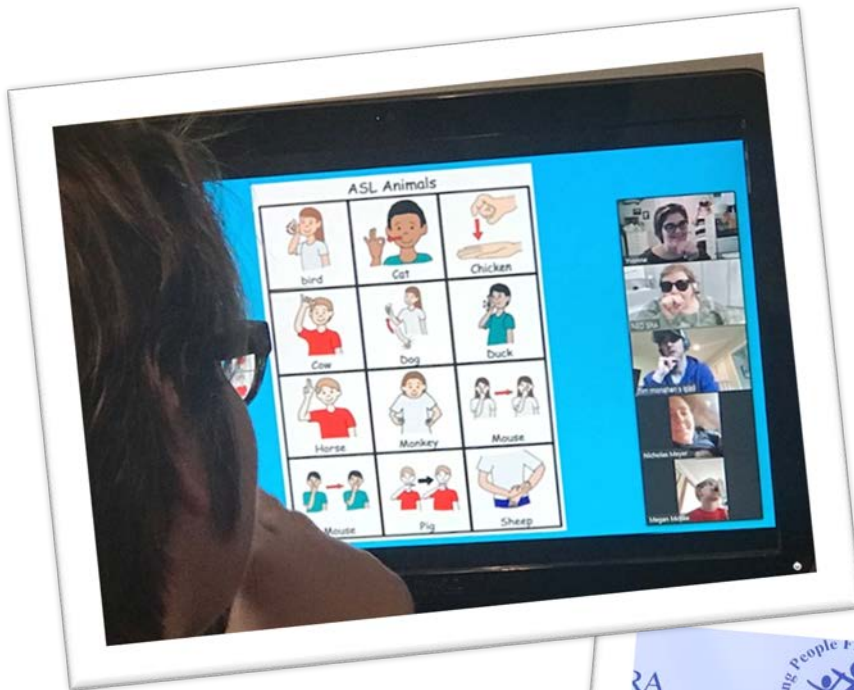
NEDSRA employs 11 full-time personnel and approximately 125 part-time and seasonal employees in an average year. This group of individuals remains relatively steady from year to year allowing for consistency in services and strong relationships with our participants and families. In addition, approximately 275 volunteers annually donate their time to enhance their lives and the lives of those we serve. Their support is invaluable in keeping staffing costs for programs contained. During the COVID-19 pandemic these numbers were affected.

The annual budget for fiscal year 2021/22 is approximately \$3.08 million, which includes \$590,410 in capital projects and \$500,000 for Member Partner ADA projects.

NEDSRA accounts for its financial activity on a fund accounting basis.

Programs and Services Offered

Services are available for individuals of all ages and all abilities. Program areas include Special Olympics sports, social clubs, cultural arts, travel, health and fitness, adventure and outdoor programming, day camps, adaptive and wheelchair athletics, and community events. Inclusion assistance is also provided for individuals seeking involvement in their local park district or village park and recreation department programs.



Executive Summary ~ FY 2021/2022

Budget Message

To the Honorable NEDSRA Board of Trustees:

NEDSRA continues to provide exceptional service to individuals with disabilities in our communities, serving an Association population base of more than 215,000 residents. In providing, maintaining and stabilizing these services, NEDSRA staff respectfully submits an operating budget for your review and consideration.

The impact on both the 2020/21 and 2021/22 Budgets as a result of the COVID 19 pandemic is significant. NEDSRA staff persevered through the restrictions to provide virtual services to participants and their families. They stepped up with innovative programming ideas and implemented these programs to keep the individuals with disabilities engaged and connected.

Our goal for this budget document is to provide the Board of Trustees with clear-cut information regarding 2021/22 major initiatives, employee services, tax and non-tax revenue sources and expenditures. The budget is divided into Unrestricted and Restricted sections.

Staff is consistently challenged, this past year more than ever, to meet or expand upon current service delivery levels, create innovative new programming and maintain excellence in service while remaining in the parameters of budget allowances.

Budget Overview

2020/21

Overall Association revenues and expenses have been impacted due to the COVID19 pandemic. This has affected both programs and fund raising causing the rescheduling or cancellation of events.

NEDSRA continues to qualify to receive the DCEO grant of \$244,400 (#43200).

Inclusion staff wages (#51210) was significantly under budget by \$95,492 as were full-time (#51100) and part-time (#51200) salaries. Part-time staff were furloughed at the end of March 2020 creating the biggest effect and the full-time decrease can be attributed to staff vacancies and a reorganization that occurred in the fall.

Consequently this affected insurance and FICA. Pensions were slightly over budget as the IMRF rate increased for 2021 and had not been published before the budget was finalized. (The rates for 2022 have been published and are in this new budget.)

Program expenses decreased as a result of the cancellations due to COVID 19 mitigations.

The Association projects to add \$730,266 to the General Fund Balance in 2020/21.

2021/22

The 2021/22 budget has been prepared with the presumption that NEDSRA will receive funding from the State of at least \$244,400 (#43200), based on historical trends.

This budget anticipates a \$50,331 (2.24 %) growth in revenue over 2020/21.

An increase in operating expenses of \$500,413 (33.59 %) is anticipated over year-end 2020/21. Capital improvements (#62000) for 2021/22 will be \$590,410.

Fund Balances

The unrestricted fund balances are maintained to avoid cash flow interruptions, provide for unanticipated expenditures or emergencies of a non-recurring nature; and/or meet unexpected increases in service delivery costs and unforeseen circumstances.

In 2021/22 a net loss in unrestricted fund balance of \$784,082 is projected; leaving the net position of the unrestricted fund balance at \$1,066,517. This complies with NEDSRA policy to retain at least three months of operating funds in this account; which is \$600,000.

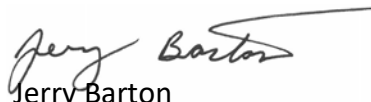
Restricted fund balance is expected to increase by \$13,215 to \$30,522. These restricted funds include the Vehicle, Special Olympics Booster Club, the Jeena Greenwalt Scholarship and the Hispanic Focus Group Scholarship. NEDSRA will not use any monies from the Vehicle Fund this fiscal year.

Staff have put forth their best effort in preparing this budget considering all scenarios with the COVID-19 pandemic crisis and mitigations. Looking forward to programs returning to normal, staff continue to adapt to changing circumstances. The dedicated efforts of the NEDSRA professional staff and the Board of Trustees are especially appreciated in the preparation of this budget.

Respectfully Submitted,



Rick Poole
Executive Director



Jerry Barton
Superintendent of Recreation



Susan Martellotta
Executive Assistant to the Director/HR Manager



Kristen Seefurth
Marketing/Communications Manager

Fund Balance Projected and Budget

	Projected 4/30/2021					
	Unrestricted	Restricted - Vehicle	Restricted - S.O. Booster	Designated - Jeena Greenwalt	Hispanic Focus Group Scholarship*	Total Fund Balance Year End 2021
Beginning Fund Balance	\$1,120,332	\$0	\$13,521	\$4,236	\$0	\$1,138,089
Operating Revenue	\$2,246,012	\$550	\$0	\$0	\$0	\$2,246,562
Operating Expenses	(\$1,489,601)	(\$200)	(\$400)	(\$400)	\$0	(\$1,490,601)
Capital Improvements	(\$26,145)	\$0	\$0	\$0	\$0	(\$26,145)
Ending Fund Balance	\$1,850,598	\$350	\$13,121	\$3,836	\$0	\$1,867,905

	Budget 4/30/2022					
	Unrestricted	Restricted - Vehicle	Restricted - S.O. Booster	Designated - Jeena Greenwalt	Hispanic Focus Group Scholarship*	Total Fund Balance Year End 2022
Beginning Fund Balance	\$1,850,598	\$350	\$13,121	\$3,836	\$0	\$1,867,905
Operating Revenue	\$2,296,343	\$8,750	\$500	\$10,000	\$1,000	\$2,315,593
Operating Expenses	(\$1,990,014)	(\$2,135)	(\$3,500)	(\$1,200)	(\$200)	(\$1,997,049)
Capital Improvements	(\$590,410)	\$0	\$0	\$0	\$0	(\$590,410)
ADA Funds Distribution	(\$500,000)					(\$500,000)
Ending Fund Balance	\$1,066,517	\$6,965	\$10,121	\$12,636	\$800	\$1,096,039

This page intentionally left blank.

					Projected Year-End	Budget	Projected Year-End 2020/21 Compared to 2021/22 Budget	
		Actuals	Actuals	Budget			Increase/	Percentage
		2018/19	2019/20	2020/21	2020/21	2021/22	Decrease	of Change
REVENUE								
41000	Partner Contributions	\$1,593,185	\$1,623,460	\$1,660,797	\$1,658,695	\$1,681,917	\$23,222	1.40%
42000	Fees & Charges	\$371,198	\$314,093	\$431,412	\$33,509	\$246,279	\$212,770	634.96%
42020	Scholarship Allocation	\$0	\$0	\$0	\$0	\$0	\$0	0.00%
43000	Fund Development	\$72,294	\$68,028	\$88,650	\$0	\$49,597	\$49,597	0.00%
43200	State/County Grant Revenue	\$244,400	\$244,400	\$244,400	\$244,400	\$244,400	\$0	0.00%
43250	Grant Revenue	\$5,401	\$23,714	\$27,000	\$15,500	\$25,000	\$9,500	61.29%
43260	PPP Loan	\$0	\$0	\$0	\$258,400	\$0	(\$258,400)	-100.00%
43600	Contributions/Donations *	\$23,204	\$33,512	\$27,500	\$21,499	\$29,750	\$8,251	38.38%
43700	Designated Contributions***	\$15,823	\$15,127	\$14,200	\$3,651	\$12,000	\$8,349	228.66%
46000	Misc. Income	\$5,676	\$13,012	\$5,000	\$8,000	\$5,000	(\$3,000)	-37.50%
46400	Park District Portion Income	\$0	\$0	\$0	\$0	\$0	\$0	0.00%
47000	Interest Earned	\$8,870	\$7,296	\$12,000	\$2,358	\$2,400	\$42	1.78%
	Revenue Total	\$2,340,052	\$2,342,641	\$2,510,959	\$2,246,012	\$2,296,343	\$50,331	2.24%
EXPENSE								
Salaries								
51100	Exempt Admin Salaries	\$820,874	\$846,931	\$836,923	\$745,043	\$692,409	(\$52,634)	-7.06%
51200	Part-Time Wages	\$326,043	\$329,636	\$410,757	\$36,392	\$301,945	\$265,553	729.70%
51210	Part-Time Wages - Inclusion	\$97,954	\$77,886	\$105,992	\$10,500	\$62,461	\$51,961	494.87%
	Sub Total	\$1,244,870	\$1,254,453	\$1,353,672	\$791,935	\$1,056,815	\$264,880	33.45%
Insurance & Pension								
51400	FICA & Medicare	\$90,006	\$93,275	\$103,556	\$60,857	\$80,846	\$19,989	32.85%
51500	IMRF	\$158,431	\$151,012	\$137,939	\$141,810	\$137,142	(\$4,668)	-3.29%
51600	Health Insurance	\$146,348	\$142,589	\$165,305	\$156,000	\$153,942	(\$2,058)	-1.32%
52000	Workers Compensation	\$6,482	\$6,419	\$5,975	\$4,233	\$4,602	\$369	8.72%
52100	Unemployment Compensation	\$1,269	\$0	\$1,500	\$0	\$1,500	\$1,500	0.00%
52300	Liability Insurance	\$12,605	\$12,527	\$12,195	\$9,296	\$10,095	\$799	8.60%
52400	Property Insurance	\$16,872	\$16,751	\$16,426	\$11,763	\$13,498	\$1,735	14.75%
	Sub Total	\$432,013	\$422,573	\$442,896	\$383,959	\$401,625	\$17,666	4.60%
Administrative Expenses								
53000	Bank Fees	\$2,861	\$3,124	\$3,000	\$2,700	\$3,000	\$300	11.11%
53010	Credit Card Merchant Fees	\$7,493	\$9,730	\$13,000	\$5,300	\$7,250	\$1,950	36.79%
53100	Postage	\$4,906	\$7,308	\$7,500	\$2,000	\$4,000	\$2,000	100.00%
53300	Meeting Related Expense	\$2,342	\$3,402	\$3,800	\$600	\$3,500	\$2,900	483.33%
53400	Office Supplies	\$9,080	\$10,360	\$11,227	\$10,500	\$10,815	\$315	3.00%
55200	Subscriptions & Publications	\$1,597	\$2,392	\$1,951	\$3,100	\$3,000	(\$100)	-3.23%
56000	Continuing Education	\$13,453	\$13,678	\$16,400	\$600	\$14,330	\$13,730	2288.33%
56100	Professional Memberships	\$6,051	\$4,936	\$5,088	\$3,490	\$3,880	\$390	11.17%
56200	Statewide Legislative Initiatives	\$0	\$41	\$500	\$0	\$500	\$500	0.00%
58500	Maintenance Expenses	\$17,274	\$16,382	\$16,798	\$18,571	\$24,600	\$6,029	32.46%
58600	Office & Computer Equipment	\$11,556	\$15,639	\$25,618	\$26,641	\$30,300	\$3,659	13.73%
	Sub Total	\$76,614	\$86,992	\$104,882	\$73,502	\$105,175	\$31,673	43.09%
Professional Services								
53700	Auditor	\$10,400	\$11,700	\$11,000	\$11,000	\$11,385	\$385	3.50%
53800	Legal Services	\$4,917	\$3,580	\$5,000	\$3,200	\$5,000	\$1,800	56.25%
53900	Professional Consultants	\$36,480	\$15,002	\$16,568	\$15,600	\$16,568	\$968	6.21%
54000	Payroll Services - Contractual	\$12,566	\$13,663	\$14,131	\$8,425	\$13,500	\$5,075	60.24%
54010	HR Services/Applications**	\$0	\$0	\$0	\$0	\$6,624	\$6,624	0.00%
54100	Business Services - Contractual	\$55,688	\$56,978	\$58,378	\$57,800	\$57,875	\$75	0.13%
54300	Contractual Services	\$38,831	\$32,554	\$40,290	\$16,546	\$31,397	\$14,851	89.76%
54400	Contractual Agreements	\$20,521	\$26,278	\$35,909	\$26,245	\$29,495	\$3,250	12.38%
55100	Legal Publications	\$628	\$1,323	\$2,490	\$1,100	\$4,115	\$3,015	274.09%
	Sub Total	\$180,030	\$161,078	\$183,766	\$139,916	\$175,959	\$36,043	25.76%
Professional Printing								
53210	Professional Printing	\$2,686	\$21,745	\$2,000	\$0	\$2,000	\$2,000	0.00%
53220	Brochure	\$12,709	\$0	\$20,000	\$0	\$4,000	\$4,000	0.00%
53240	In-House Printing	\$797	\$231	\$0	\$0	\$0	\$0	0.00%
	Sub Total	\$16,192	\$21,976	\$22,000	\$0	\$6,000	\$6,000	0.00%
Marketing/Advertising								
55050	Marketing/Advertising	\$633	\$1,637	\$3,900	\$406	\$3,900	\$3,494	860.59%
55150	Digital Marketing	\$2,064	\$115	\$600	\$0	\$1,300	\$1,300	0.00%
55175	Marketing Material	\$19	\$577	\$900	\$149	\$900	\$751	504.03%
55180	Promotional Marketing	\$1,672	\$373	\$1,500	\$107	\$2,500	\$2,393	2236.45%
55185	Fund Development Community Outreach**	\$0	\$850	\$1,500	\$359	\$1,500	\$1,141	317.83%
	Sub Total	\$4,388	\$3,552	\$8,400	\$1,021	\$10,100	\$9,079	889.23%

					Projected Year-End 2020/21	Budget 2021/22	Projected Year-End 2020/21 Compared to 2021/22 Budget	
		Actuals	Actuals	Budget			Increase/	Percentage
		2018/19	2019/20	2020/21			Decrease	of Change
Program Expenses								
53500	Program Supplies	\$61,166	\$76,934	\$89,161	\$12,482	\$52,348	\$39,866	319.39%
53510	Support Staff Supplies	\$2,227	\$167	\$3,120	\$0	\$2,600	\$2,600	0.00%
53520	Inclusion Staff Supplies	\$727	\$728	\$1,500	\$250	\$1,500	\$1,250	500.00%
53600	Program Admissions & Facility Space	\$69,060	\$49,932	\$78,231	\$3,232	\$33,370	\$30,138	932.49%
53650	Recreation Equipment	\$6,652	\$3,278	\$9,620	\$3,500	\$8,280	\$4,780	136.57%
	Sub Total	\$139,832	\$131,039	\$181,632	\$19,464	\$98,098	\$78,634	404.00%
Vehicles								
57100	Vehicle Fuel, Equipment & Tolls	\$13,695	\$14,930	\$20,116	\$2,002	\$13,000	\$10,998	549.35%
57200	Staff Vehicle Reimbursement	\$4,388	\$3,425	\$4,143	\$1,620	\$2,190	\$570	35.19%
57300	Vehicle Repair & Parts	\$15,183	\$11,533	\$15,500	\$7,210	\$14,400	\$7,190	99.72%
57400	Vehicle Rental	\$540	\$699	\$2,400	\$0	\$0	\$0	0.00%
	Sub Total	\$33,806	\$30,587	\$42,159	\$10,832	\$29,590	\$18,758	173.17%
Utilities								
58100	Telephones & Internet	\$15,884	\$22,511	\$19,000	\$21,800	\$18,000	(\$3,800)	-17.43%
58200	Electricity	\$16,032	\$11,219	\$10,851	\$11,200	\$12,650	\$1,450	12.95%
58300	Natural Gas	\$8,389	\$4,780	\$5,711	\$6,650	\$7,500	\$850	12.78%
58400	Water	\$2,021	\$1,855	\$1,894	\$600	\$1,550	\$950	158.33%
	Sub Total	\$42,326	\$40,365	\$37,456	\$40,250	\$39,700	(\$550)	-1.37%
Special Projects								
58700	Synergy Expenses	\$23,560	\$24,673	\$10,000	\$10,000	\$10,000	\$0	0.00%
58850	Designated Donation Expense***	\$1,937	\$40	\$0	\$7,669	\$11,000	\$3,331	43.43%
	Sub Total	\$25,498	\$24,713	\$10,000	\$17,669	\$21,000	\$3,331	18.85%
Fund Raising Expenses								
66010	Direct Mail Campaign	\$0	\$0	\$350	\$0	\$425	\$425	0.00%
66030	BBQ Bash Fund Raising	\$75	\$3,341	\$3,100	\$0	\$3,025	\$3,025	0.00%
66040	Golf Classic Fund Raising	\$10,407	\$11,544	\$12,900	\$0	\$11,000	\$11,000	0.00%
66050	Additional Fundraising	\$878	\$12	\$3,575	\$0	\$4,312	\$4,312	0.00%
	Sub Total	\$11,359	\$14,897	\$19,925	\$0	\$18,762	\$18,762	0.00%
Miscellaneous Expenses								
53020	Bad Debt Expense	\$0	\$7,869	\$0	\$0	\$0	\$0	0.00%
58910	Risk Management	\$2,730	\$4,762	\$9,125	\$8,163	\$12,640	\$4,477	54.85%
58920	Park District Portion Expense	\$3,265	\$0	\$0	\$0	\$0	\$0	0.00%
58930	Director's Administrative Fund	\$6,477	\$1,835	\$1,500	\$1,385	\$1,500	\$115	8.30%
58940	Employee Recognition/Relations	\$1,809	\$2,454	\$2,500	\$505	\$4,050	\$3,545	701.98%
67100	Scholarship Allocation	\$14,025	\$17,312	\$20,000	\$1,000	\$9,000	\$8,000	800.00%
	Sub Total	\$28,306	\$34,232	\$33,125	\$11,053	\$27,190	\$16,137	146.00%
	Expense Total	\$2,235,234	\$2,226,457	\$2,439,913	\$1,489,601	\$1,990,014	\$500,413	33.59%
	Revenue Over Expenses	\$104,818	\$116,184	\$71,046	\$756,411	\$306,328	(\$450,083)	
Non-Operating Expenses (\$ from Fund Accounts)								
62000	Capital Improvements	\$85,990	\$32,348	\$533,000	\$26,145	\$590,410	\$564,265	2158.21%
	Total Capital and Operations Support Expense	\$85,990	\$32,348	\$533,000	\$26,145	\$590,410	\$564,265	
66010	ADA Funds Distribution					\$500,000		
	Total Net Income/(Loss) including ADA Funds Distribution	\$18,828	\$83,836	(\$461,954)	\$730,266	(\$784,082)	(\$1,014,348)	
	* Included in Fund Development Total in prior years.							
	** 2021/2022 New Account							

Unrestricted Budget Details 2021/22

Unrestricted Revenue Descriptions and Calculations

<u>Revenue</u>	<u>General Operating Funds</u>				
41000 Partner Contributions \$1,681,917	Approved Member Partner Contributions for 2021/22. Further details regarding member partner contributions can be found in the NEDSRA Articles of Agreement. CPI for 2022 is 1.4%				
		<u>2018/2019</u>	<u>2019/2020</u>	<u>2020/2021</u>	<u>2021/2022</u>
	Addison	\$279,757	\$285,073	\$291,629	\$295,712
	Bensenville	178,292	181,680	\$185,858	\$188,460
	Butterfield	62,121	63,302	\$64,758	\$65,665
	Glendale Heights	171,987	175,255	\$179,286	\$181,796
	Itasca	89,228	90,923	\$93,014	\$94,316
	Lombard	296,094	301,720	\$308,660	\$312,981
	Medinah	84,765	86,376	\$88,362	\$89,599
	Oakbrook Terrace	67,183	68,460	\$70,034	\$71,014
	Schiller Park	89,687	91,392	\$91,392	\$92,671
	Villa Park	138,555	141,188	\$144,435	\$146,457
	Wood Dale	135,516	138,091	\$141,267	\$143,245
	Total Member Partner Contributions	\$1,593,187	\$1,623,457	\$1,658,695	\$1,681,917
42000 Fees and Charges \$246,279	Anticipated Fees and Charges to be collected for programs and services provided to youth, adults, Special Olympics, sports, adults, school-related and others. Includes consideration of cancellation factors, fee assistance and other variables.				
	42010 Reach for the Stars			\$3,878	
	42020 Scholarship Allocation			0	
	42100 Rec. Special Events			0	
	42200 AID			81,589	
	42300 APD			3,621	
	42400 Youth			43,814	
	42500 Schools			29,346	
	42600 Special Olympics			39,261	
	42700 TREC			44,770	
	42800 Veterans			0	
	42900 Adapt Sports			0	
				<u>0</u>	
					\$246,279
43000 Fund Development \$49,597	Funds generated through special projects and events. These funds may be from revenue generated during this fiscal year, as well as fund-raising efforts taking place in prior fiscal years for the purpose of continuing the agency service. Certain amounts of identified funds may be carried over from one year to the next to assure continuity of purpose and use of funds donated or contributed.				
	43300 BBQ Bash Fundraiser				
	43312 Sponsorship		\$750		
	43314 Registration		2,000		
	43316 Donations		97		
	43318 Raffles/Contests		375		
					\$3,222
	43400 Golf Classic				
	43412 Sponsorship		\$25,000		
	43414 Registration		13,500		
	43416 Donations		1,875		
	43418 Raffles/Contests		3,750		
					\$44,125
	43500 Additional Fundraising				
	43512 Sponsorship		\$350		
	43514 Registration		750		
	43516 Donations		400		
	43518 Raffles/Contests				
					\$1,500
	44100 Direct Mail Campaign		\$750		
					<u>\$750</u>
					\$49,597

Unrestricted Budget Details 2021/22

Unrestricted Revenue Descriptions and Calculations

43200 State/County Grant Rev. \$244,400	Revenue generated from the fulfillment of state/county grants.		\$244,400
43250 Grant Revenue \$25,000	Revenue generated from grants applied for by Fund Development.		\$25,000
43600 Contributions/Donations \$29,750	Funds generated through contributions and donations that are not restricted.		
	43610 Corporate	\$9,000	
	43630 Individual	5,000	
	43640 Knights of Columbus	15,000	
	43650 Service Clubs	750	\$29,750
43700 Designated Contributions/Donations \$12,000	Funds generated through contributions and donations that are designated for a certain purpose or use. Certain amounts of identified funds may be carried over from one year to the next to assure continuity of purpose and use of funds donated or contributed.		
	43710 Corporate - Designated	\$7,500	
	43720 Foundation - Designated		
	43730 Individual - Designated	1,000	
	43750 Service Clubs - Designated	3,500	\$12,000
46000 Misc. Income \$5,000	This account is for miscellaneous revenue received during the year that does not fall into any other revenue accounts, i.e., PDRMA Excellence Award, proceeds from sale of equipment or vehicles, purchasing card rebate, etc.		
	46000 Misc. Income	\$5,000	
	46600 Rentals	0	\$5,000
46400 Park District Portion Income \$0	Portion of shared expenses invoiced to Addison Park District.		\$0
47000 Interest Earned \$2,400	An estimate based on our present investment portfolio and our projected fund balance and cash flow analysis. Projected rates of interest were used to calculate the anticipated revenue from our investments during the next year.		\$2,400
	TOTAL ANTICIPATED REVENUE		\$2,296,343

Unrestricted Budget Details 2021/22

Unrestricted Expense Details and Calculations

Salaries

51100
Exempt Admin Salaries \$692,409 Salaries for all exempt full-time positions with a 2.0% raise pool. NEDSRA had staff changes in FY21 that reduced the budgeted full-time wages for FY21. \$692,409

51200
Part-time Wages \$301,945 Projected hourly wages for all seasonal and part-time staff to provide recreation services in all categories and other administrative and maintenance functions. These include wages for part-time marketing, part-time clerical, the addition of a 5th day of TREC and other increased programming. \$301,945

51210
Part-time Wages- Inclusion \$62,461 Projected wages for inclusion aids at Member Partner districts.

	Addison Park District	Oakbrook Terrace Park District
	Bensenville Park District	Village of Schiller Park
	Butterfield Park District	Village of Villa Park
	Village of Glendale Heights	Wood Dale Park District
	Itasca Park District	20 Hour/Week Inclusion Specialist
	Lombard Park District	Bonuses
	Medinah Park District	Referrals
		\$62,461

Insurance & Pension

51400
FICA & Medicare \$80,846 To fund NEDSRA's mandated payment of FICA and Medicare payments for employees @ 7.65%.

		\$52,969
	Full-time staff	\$23,099
	Part-time staff	\$4,778
	Part-time staff - Inclusion	\$4,778
		\$80,846

51500
IMRF \$137,142 Total of all eligible employees participating in IMRF at the rate of 18.83% for 8 months and 21.63% for 4 months. \$137,142

51600
Health Insurance \$153,942 Costs for health coverage for all eligible personnel. Also reflects opt-outs and flex spending fees. Includes a 3% projected rate increase for 2021 based on history of prior years.

<u>PPO Employee %</u>		<u>HMO Employee</u>	
Single	12%	Single	12%
Emp + Child	15%	Emp + Child	14%
Emp + Spouse	18%	Emp + Spouse	15%
Emp + CHN	21%	Emp + CHN	16%
Family	24%	Family	17%

\$153,942

52000
Workers' Compensation \$4,602 This is the relative cost of recreation and support staff Workers' Compensation premiums for our participation in PDRMA (Park District Risk Management Agency). \$4,602

52100
Unemployment Compensation \$1,500 Costs incurred from possible unemployment claims. \$1,500

52300
Liability Insurance \$10,095 Includes protection for all Trustees, officers and staff for decisions and errors in actions taken in their Board of Trustees and administrative staff capacity. Insured as part of the PDRMA membership. Covers the Association's recreation programs with general liability and excess liability plans, as part of our participation in PDRMA. Also covers employment practices and pollution liability. (PDRMA projection). \$10,095

52400
Property Insurance \$13,498 To cover the Association's building, vehicles and property with appropriate property coverage as part of our participation in PDRMA. \$13,498

Unrestricted Budget Details 2021/22

Unrestricted Expense Details and Calculations

<u>Operating Expenses</u>				
53000 Bank Fees \$3,000	Fees and charges incurred to maintain accounts at MB Financial Bank. The accounts included are: Operating, Payroll, Merchant, AFLAC, Foundation and Money Market.			\$3,000
53010 Credit Card Merchant Fees \$7,250	Fees and charges for Merchant Bank fees for credit cards and increased on-line processing fees with new on-line registration.			\$7,250
53100 Postage \$4,000	Postage necessary for general mailings, shipping and delivery, and brochure. Brochure mailings will be down as more are distributed electronically.			\$4,000
53200 Professional Printing \$6,000	Printing costs associated with four seasonal program brochures, one Annual Service Report, agency trifolds, business cards, programs, and various in-house projects.	53210 53220 53240	Professional Printing Brochure In-House Printing	2,000 4,000 <u>0</u> \$6,000
53300 Meeting Related Expenses \$3,500	This covers costs associated with hosting or attending formal or informal meetings and costs associated with community outreach. Expenses for Board/staff/participant meetings and functions throughout the year; such as: Mtg - Legislative Advocacy Division Supplies Mtg - Community Lunch - Dir./Admin Mtg - Misc. meetings at NEDSRA Rec staff, member district liaison and professional affiliates meetings Outreach registration Support Staff Orientations Hispanic Parent Group Parent Education Sessions Summer Inclusion/Camp Meetings Member Partner Holiday Gathering			\$3,500
53400 Office Supplies \$10,815	Routine office supplies necessary for the day-to-day operations of the association for recreation, program and administrative positions, general office areas, including letterhead, envelopes, labels, printer toner, drums, fusers, etc. Supplies and paper necessary for the day-to-day operations of copiers and printers.			\$10,815
53500 Program Supplies \$52,348	Funds for consumable items for successful implementation of all programs and services	53501 53502 53503 53504 53505 53506 53507 53508 53509	Rec. Special Events AID APD Youth Schools Special Olympics TREC Veterans Adapt Sports	\$15,585 \$19,732 \$1,120 \$2,311 \$5,650 \$3,220 \$2,640 \$2,090 <u>\$0</u> \$52,348
53510 Support Staff Supplies \$2,600	Expenses provided to part-time staff for apparel, incentives and orientations.			\$2,600
53520 Inclusion Staff Supplies \$1,500	Expenses provided to inclusion staff for apparel or special gear needed to implement programs.			\$1,500
53600 Program Admissions & Facility Space \$33,370	Funds for the purchase of tickets and/or admission rights. Fees for rental of specialized facilities for recreation programs including swimming pools, therapeutic pools, non-partner recreation facilities, schools and overnight campsites	53601 53602 53603 53604 53605 53606 53607 53608 53609	Rec. Special Events AID APD Youth Schools Special Olympics TREC Veterans Adaptive Sports	\$975 \$13,195 \$1,120 \$2,960 \$2,600 \$10,000 \$1,320 \$1,200 <u>\$0</u> \$33,370

Unrestricted Budget Details 2021/22

Unrestricted Expense Details and Calculations

53650 Recreation Equipment \$8,280	Funds to purchase specific equipment, therapeutic apparatus, team apparel, exercise and sports equipment and normal equipment replacement. Note: Team uniforms are budgeted and replaced on a rotating basis.	Uniforms Sports Equipment	Sensory Room General Program Equipment	\$8,280	
53700 Auditor \$11,385	Costs incurred for annual audit by an independent auditing firm, DCEO Grant audits, as well as the study of specific areas of management, as determined by the Board.			\$11,385	
53800 Legal Services \$5,000	Funds monthly and project-based legal counsel and research. This includes \$75 monthly retainer.			\$5,000	
53900 Professional Consultants \$16,568	Computer support staff on contractual basis. Fund Development, registration system, Office Suite, network, database management, systems upgrade & pension plan consultants. Consultants at the following rates:		Techpro monthly support, back-ups, security & email hosting Techpro additional support, installs, & upgrades Segal Consultant - PDRMA actuary	\$13,368 \$700 <u>\$2,500</u>	
				\$16,568	
54000 Payroll Services - Contractual \$13,500	Contracted payroll company for processing bi-weekly payroll, payroll taxes, 940 filing and W-2 processing.			\$13,500	
54010 HR Services/Applications \$6,624	On line program for onboarding/tracking employees			\$6,624	
54100 Business Services - Contractual \$57,875	Accounting/business services; contracted with outside consultants.		Lauterbach & Amen Illinois Charitable Trust	\$57,875	
54300 Contractual Services \$31,397	Funds for the purpose of utilizing contractual staff for recreation and support services.	54300 Admin/General 54301 Rec. Special Events 54302 AID 54303 APD 54304 Youth	\$700 \$5,260 \$0 \$0 \$0	54305 Schools 54306 Special Olympics 54307 TREC 54308 Veterans 53509 Adapt Sports	\$0 \$1,480 \$0 \$23,957 <u>\$0</u>
				\$31,397	
54400 Contractual Agreements \$29,495	This account was set up to identify and evaluate the needs for various maintenance contracts on selected pieces of equipment NEDSRA owns. We presently do not hold maintenance agreements for all of our machines.	Copiers - (2) service, supplies, etc. Jensen's HVAC Elevator Annual Agreement - NEDSRA Portion Sentry Security Alarm monitoring and service calls Pitney Bowes postage meter	Raisers Edge Annual Support - Blackbaud RecTrac Annual Support Miscellaneous service calls and parts WebLinx annual support fee	\$29,495	
55000 Marketing/Advertising \$10,100	Costs to present the agency to our consumers, donors and the general public.		55050 Marketing/Advertising 55150 Digital Marketing 55175 Marketing Material 55180 Promotional Marketing 55185 Fund Development Community Outre	\$3,900 \$1,300 \$900 \$2,500 <u>\$1,500</u>	
				\$10,100	
55100 Legal Publications \$4,115	Costs incurred in the publication and presentation of legal notices, bid documents and position announcements.	Bot Pub Not (3@120) Job Ads - Rec, Admin, Summer	Van Secretary of State - Annual Report File Fee	\$4,115	

Unrestricted Budget Details 2021/22

Unrestricted Expense Details and Calculations

55200 Subscriptions & Publications \$3,000	Subscriptions related to operations and quality of service provided. Included are resource books, newspapers, online marketing subscriptions, zoom meeting subscription and software subscriptions. Mail subscriptions to stay current in Therapeutic Rec trends and development, newspapers to monitor coverage and opportunities. Marketing subscriptions include Adobe, BigStock, Survey Monkey and Constant Contact.	\$3,000
56000 Continuing Education/ Professional Conferences \$14,330	Funds for the agency's full-time staff to participate in educational conferences. Staff is encouraged to attend local seminars and workshops and to bring back current information for the benefit of the Association as a whole, as well as each person's personal development. "All full-time personnel shall be encouraged to further their education." Includes IPRA, NRPA and trainings such as Leadership Academy, TR Summit, Professional Development School, etc.	\$14,330
56100 Professional Memberships \$3,880	Funds for memberships and involvement in professional organizations (Individual and Agency); including: NRPA IPRA IAPD Legislative Advocacy Division of ITRS Illinois and American Art Therapy Associations NCTRC/CPRP West Suburban Philanthropy Professional HR Manager	\$3,880
56200 Statewide Legislative Initiatives \$500	Marketing and networking through advertising, special government events, printed materials; as well as lobbyist assistance and general advocacy efforts.	\$500
57100 Vehicle Fuel Costs, Equipment, Tolls \$13,000	Projected expenses to cover vehicle fuel, parking and tolls for Association vehicles.	\$13,000
57200 Vehicle Reimbursement, Mileage, Tolls \$2,190	Funds to reimburse staff for the use of their personal vehicles in the service of NEDSRA. Reimbursements are based on actual mileage used at the IRS rate. Reimbursement for travel expenses to programs, events, meetings and related parking expenses.	\$2,190
57300 Vehicle Repairs, Parts, Labor, Safety \$14,400	Funds for the repair of the association's ADA vehicles. This includes the cost of labor to make repairs and service on a preventative maintenance schedule, including adjustment to the ADA lift apparatus.	\$14,400
57400 Vehicle Rental \$0	Bus rentals for programs or to temporarily replace a disabled fleet vehicle.	\$0
58100 Telephone & Internet \$18,000	Costs for telephone services used in the implementation of administration and services. Includes basic use for Centennial Place, cell phones, cell phone reimbursements, replacement parts, chargers, batteries, phones & internet fees.	\$18,000
58200 Electricity \$12,650	Projected Electric expenses based off prior 18-month actuals and historical average increase/decrease.	\$12,650
58300 Natural Gas \$7,500	Projected Natural Gas expenses based off prior 18-month actuals and historical average increase/decrease.	\$7,500
58400 Water \$1,550	Billed from Village of Addison. Based on historical expenses data.	\$1,550
58500 Facility Maintenance Expenses \$24,600	Costs to cover all building cleaning supplies, paper products, floor treatment and regular care, chemicals, trash removal, routine repair and labor, painting, carpet cleaning, gym floor, etc.	\$24,600

Unrestricted Budget Details 2021/22

Unrestricted Expense Details and Calculations

58600 Office & Computer Equipment \$30,300	These funds will be utilized for the replacement of existing equipment and the purchase of furniture for office and meeting rooms, floor protectors, computer equipment, computer keyboards/mouse replacements, signage for office and operational enhancements.	\$30,300
58700 Synergy Expense \$10,000	Expenses for Synergy Adapted Athletics; year two of three year commitment.	\$10,000
58850 Designated Donation Expense \$11,000	Funds expensed from designated donations or for a designated purpose. The Board of Trustees has directed \$10,000 for the Jeena Greenwalt Scholarship and \$1,000 for the Hispanic Focus Group Scholarship.	\$11,000
58910 Loss Prevention \$12,640	Materials and activities specific to our Risk Management and Loss Prevention program that are not already incorporated in other accounts, such as physicals/drug/driver abstracts, background checks, safety training, sanitation and first aid supplies	\$12,640
58920 Park District Portion Expense \$0	Portion of shared expenses paid to Addison Park District.	\$0
58930 Director's Administrative Fund \$1,500	This account supports the involvement of the administration and Board in legislative action, community events and member partner activities. This fund also supports special recognitions, events and employee incentives.	\$1,500
58940 Employee Recognition/Relations \$4,050	Recognizing, rewarding employees for level of service, producing high quality results, and as a group to increase morale and foster an effective work environment. This includes staff recognition/longevity, annual holiday celebration, socials/celebrations for birthday, marriage, births, etc.	\$4,050
Fund Raising Expenses \$18,762	Costs incurred to facilitate the implementation of fund-raising events: i.e., Golf Classic, BBQ Bash, or other events.	

66010	Direct Mail Campaign		66040	Golf Classic Fund Raising Expenses	
66015	Postage	\$75	66041	Catering	\$3,800
66036	Printing	\$350	66043	Contractual	\$900
		<u>\$425</u>	66045	Postage	\$150
66030	BBQ Bash Fund Raising Expense		66046	Printing	\$1,350
66031	Catering	\$800	66047	Staff	\$300
66033	Contractual	\$1,100	66049	Supplies &	<u>\$4,500</u>
66035	Postage	\$125			\$11,000
66036	Printing	\$325	66050	Additional Fundraising Expense	
66037	Staff	\$300	66051	Catering	\$2,600
66039	Supplies & Facility	<u>\$375</u>	66053	Contractual	\$1,100
		\$3,025	66055	Postage	\$112
			66056	Printing	\$250
			66057	Staff	\$0
			66059	Supplies &	<u>\$250</u>
					\$4,312
					<u>\$18,762</u>

67100 \$9,000	Reserve Fund Expenses: Scholarship/Fee Assistance	\$9,000
------------------	---	---------

Sub-Total Expenses \$ 1,990,014

62000 Capital Improvements \$590,410	Money paid out for capital needs of the Agency, such as major building repairs, construction, technology upgrades, telephone systems, accessibility projects, etc.	
	+ Roof New/Repair	\$128,000
	+ Roof Top AC Gym	\$85,000
	+ ADA Compliant Bathrooms 2nd Floor	\$125,000
	+ Front Entrance Improvement	\$128,000
	Front Office Update & Equipment	\$13,000
	Sensory Room Floor	\$3,000
	Elevator Update *	\$40,000
	Door Frames Painting	\$7,000
	Laminate Resurfaced	\$24,160
	* Gym Floor Sanding	\$15,000
	* Gym Pads	\$3,250
	* Electric Basket Hgt Adj	\$6,000
	* Gym Curtain	\$8,000
	* Main Level Bathroom Floor	\$5,000
	* NEDSRA share of total with Addison PD + Carry over from prior fiscal year.	\$590,410
	Capital Expenses	<u>\$590,410</u>

Total Expenses \$ 2,580,424

66010 ADA Funds Distribution \$500,000	Funds to be distributed to Member Partners to be used on local ADA projects. This allocation would be proportionate to the Partner's contribution percentage as shown.	\$ 500,000
--	--	------------

	% of Total Partner Contribution Revenue	Amount to be Allocated
Addison	18%	\$87,909
Bensenville	11%	\$56,025
Butterfield	4%	\$19,521
Glendale Heights	11%	\$54,044
Itasca	6%	\$28,038
Lombard	19%	\$93,043
Medinah	5%	\$26,636
Oakbrook Terrace	4%	\$21,111
Schiller Park	6%	\$27,549
Villa Park	9%	\$43,539
Wood Dale	9%	\$42,584
Total Expenses with potential partner distribution used.		<u>\$ 2,080,424</u>

This page intentionally left blank.

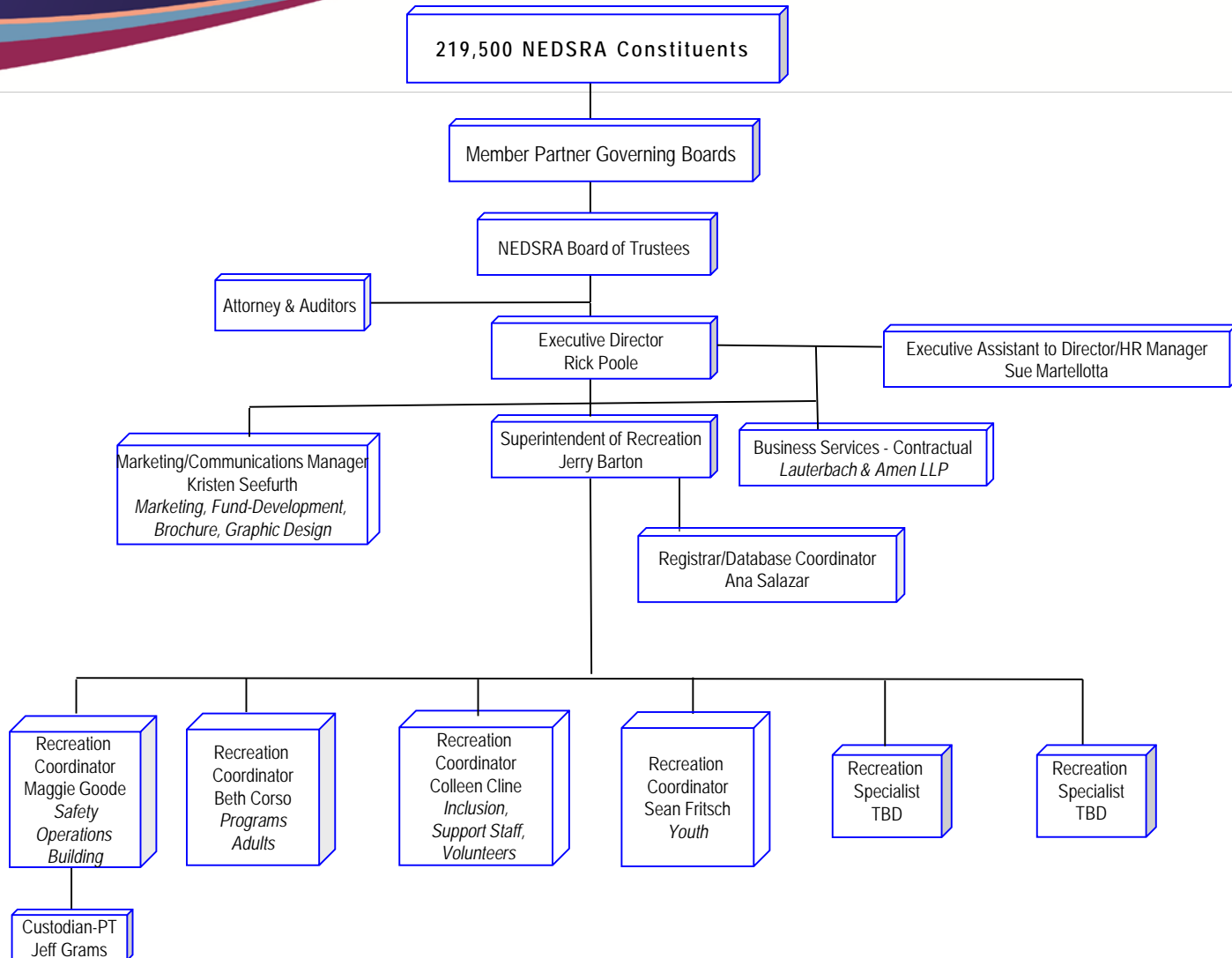
Restricted Budget 2021/22

						Projected Year-End 2020/21	
RESTRICTED		Actuals	Actuals	Budget	Projected Year-End	Budget	Projected Year-End 2020/21 Compared to 2021/22 Budget
	Salaries for all exempt full-time positions with a	2018/19	2019/20	2020/21	2020/21	2021/22	Increase/Decrease
REVENUE							
43760	Jeena Greenwalt Scholarship Donations	\$0	\$0	\$0	\$0	\$10,000	\$10,000
43780	Hispanic Focus Group Scholarship Donations	\$0	\$0	\$0	\$0	\$1,000	\$1,000
44000	Golf Marathon Revenue	\$10,859	\$10,453	\$12,000	\$550	\$8,000	\$7,450
44600	Accessible Transportation	\$0	\$1,000	\$1,000		\$750	\$750
44230	Booster Club Supporting S.O. Sports	\$2,709	\$1,920	\$1,000	\$0	\$500	\$500
	Revenue Sub-Total	\$13,568	\$13,373	\$14,000	\$ 550.00	\$20,250	\$ 19,700.00
EXPENSE							
66060	Fund Raising Expenses - Golf Marathon (Golf Marathon Exp not itemized in prior years)	\$1,976	\$788	\$1,900	\$200	\$2,135	\$1,935
60060	Jeena Greenwalt Scholarship Expense	\$400	\$374	\$800	\$400	\$1,200	\$800
60080	Hispanic Focus Group Scholarship Expenses	\$0	\$0	\$200	\$0	\$200	\$0
61300	S.O. Boosters Expense	\$2,021	\$3,558	\$2,000	\$400	\$3,500	\$3,100
65000	Vehicle Replacement Expense	\$68,723	\$46,903	\$0	\$0	\$0	\$0
	Expense Sub-Total	\$73,120	\$51,623	\$4,900	\$1,000	\$7,035	\$5,835
Restricted Total Net Income/(Loss)		(\$59,552)	(\$38,250)	\$9,100	(\$450)	\$13,215	\$13,865

Restricted Budget Details 2021/22

Restricted Revenue & Expense Detail and Calculations

<u>Revenue</u>				
43760				
Jeena Greenwalt Scholarship Donations	Revenue from donations towards this scholarship fund or transferred from General Fund Balance as directed by the Board of Trustees.			\$10,000
\$10,000				
43780				
Hispanic Group Scholarship Donations	Revenue from donations towards this scholarship fund or transferred from General Fund Balance as directed by the Board of Trustees.			\$1,000
\$1,000				
44000				
Golf Marathon Revenue - Vehicle Replacement	Revenue raised from event specifically for purchase of NEDSRA vehicles.			
\$8,000		44012 Sponsorship	\$8,000	
		44014 Registration	\$0	
		44016 Donations	\$0	
		44018 Raffles/Contests	\$0	
			<u>\$0</u>	\$8,000
44600				
Accessible Transport	Revenue from other than Golf Marathon			\$750
\$750				
44230				
Booster Club Supporting S.O. Sports	Revenue from fund-raising efforts of booster club, restricted to support NEDSRA Special Olympics athletes.			\$500
\$500				<u>\$500</u>
Total Budgeted Restricted Revenue				<u><u>\$20,250</u></u>
<u>Expense</u>				
66060				
Golf Marathon Fund Raising Expense	Costs incurred to facilitate the Golf Marathon event	66061 Catering	\$415	
\$2,135		66063 Contractual	\$375	
		66065 Postage	\$70	
		66066 Printing	\$150	
		66067 Staff	\$0	
		66069 Supplies & Facility	\$1,125	
			<u>\$1,125</u>	\$2,135
60060				
Jeena Greenwalt Scholarship Expense	Expense when scholarship is awarded.			\$1,200
\$1,200				
60080				
Hispanic Group Scholarship Expense	Expense when scholarship is awarded.			\$200
\$200				
61300				
S.O. Boosters Expense	Costs incurred for events, tournaments, gear, etc., that directly impact NEDSRA Special Olympics athletes, as well as sponsorship of the NEDSRA Special Olympics Sports Banquet and may include sponsorship of athlete's attendance at tournaments and transportation to S.O. events.			\$3,500
\$3,500				
65000				
Vehicle Replacement Expense	Money used to purchase adaptive vehicles for programs. Money raised at the Golf Marathon fund raiser each year is used to fund vehicle purchases. There will be no purchase this fiscal year.			\$0
\$0				<u>\$0</u>
Total Budgeted Restricted Expenses				<u><u>\$7,035</u></u>



This page intentionally left blank.

NEDSRA Salary Schedule

PROFESSIONAL POSITIONS	2021 Hiring Ranges Based on 2020 CPI of 1.4%		
	Hiring Minimum	Hiring Maximum	Position Cap
Administrative Assistant (Registrar, Secretary)	\$ 33,550	\$ 38,834	\$ 57,036
Recreation Specialist	\$ 37,415	\$ 43,308	\$ 63,606
Recreation Coordinator	\$ 40,969	\$ 47,422	\$ 69,647
Recreation Manager	\$ 44,255	\$ 51,225	\$ 75,233
Executive Assistant to the Director/HR Manager	\$ 45,760	\$ 52,967	\$ 77,792
Marketing and Communications Manager	\$ 51,288	\$ 59,366	\$ 87,190
Superintendent of Recreation	\$ 65,048	\$ 75,294	\$ 110,582
Executive Director	\$ 94,170	\$ 109,002	\$ 160,089

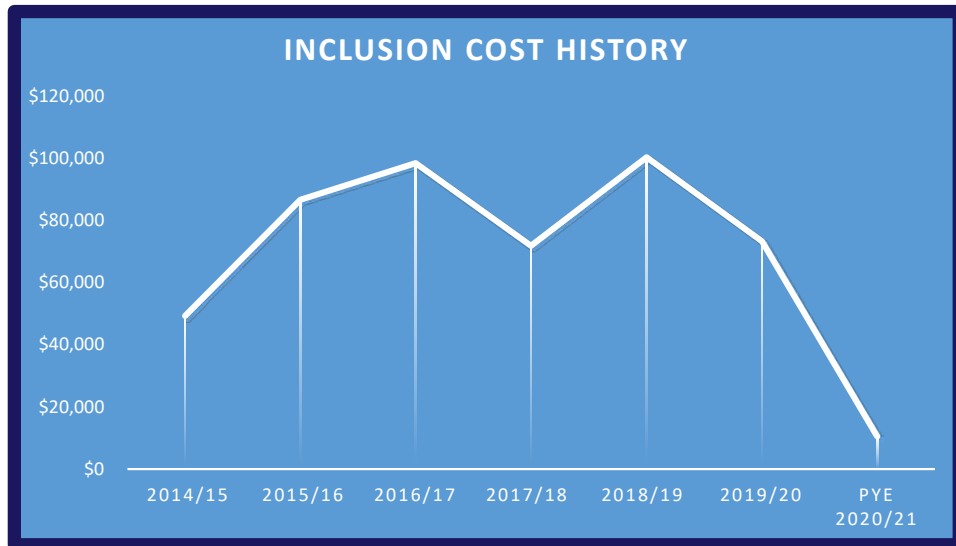
Hiring ranges are adjusted annually. The hiring minimum increase is equal to the prior year CPI and the hiring max is increased by 75% of the prior year CPI. Caps equal hiring minimum plus 70%.

This page intentionally left blank.

NEDSRA Member Partner Inclusion History

(Significant drop in 2020/21 due to COVID-19 Mitigations)

Member Partner	2014/15	2015/16	2016/17	2017/18	2018/19	2019/20	PYE 2020/21	% of 2019/20 Total
Addison	\$10,228	\$12,200	\$7,273	\$2,875	\$2,624	\$3,021	\$500	4.8%
Bensenville	\$7,589	\$8,528	\$24,766	\$11,413	\$5,052	\$4,869	\$0	0.0%
Butterfield	\$2,675	\$10,249	\$11,556	\$11,183	\$30,017	\$7,988	\$2,000	19.0%
Glendale Heights	\$2,861	\$9,834	\$10,272	\$2,974	\$7,527	\$1,703	\$0	0.0%
Itasca	\$555	\$597	\$1,299	\$4,399	\$5,828	\$7,556	\$0	0.0%
Lombard	\$8,693	\$15,098	\$6,040	\$12,764	\$14,752	\$15,635	\$7,500	71.4%
Medinah	\$0	\$0	\$1,948	\$0	\$2,613	\$438	\$0	0.0%
Oakbrook Terrace	\$4,298	\$0	\$2,580	\$198	\$3,183	\$3,184	\$0	0.0%
Schiller Park	\$4,560	\$9,647	\$13,514	\$9,608	\$13,388	\$9,234	\$0	0.0%
Villa Park	\$7,563	\$16,933	\$13,437	\$10,972	\$7,460	\$14,402	\$0	0.0%
Wood Dale	\$271	\$3,606	\$5,817	\$180	\$500	\$2,237	\$500	4.8%
Total	\$49,293	\$86,692	\$98,502	\$66,565	\$92,944	\$70,267	\$10,500	100%
Inclusion Coordinator - Part-time	\$0	\$0	\$0	\$5,323	\$7,444	\$3,078	\$0	
Total Inclusion Cost	\$49,293	\$86,692	\$98,502	\$71,889	\$100,388	\$73,345	\$10,500	



This page intentionally left blank.

NEDSRA Vehicle Replacement Schedule and Fund Projection

Van Inventory and Golf Marathon History						
Fiscal Year	Van	Model Year	Current Mileage	Capacity	Purchased Price	Golf Marathon Net Revenue
2009/2010	Van Wilder	2010	89,534	18-Passenger w/lift CDL	\$61,128	\$36,695
2010/2011	No purchase					\$34,918
2011/2012	** Vanna White	2012	63,483	14-Passenger w/o lift	\$47,636	\$32,673
2012/2013	No purchase					\$25,676
2013/2014	No purchase					\$27,091
2014/2015	Dick Van Dyke	2015	57,270	14-Passenger w/lift	\$61,400	\$32,002
2016/2017	Van Damme	2017	33,915	14-Passenger w/lift	\$63,789	\$13,574
2017/2018	Van Morrison	2017	11,692	6-Passenger Mini Van w/o lift	\$21,203	\$14,420
2018/2019	Van Down By the River	2018	13157	14-Passenger w/lift	\$68,723	\$11,555
2019/2020	Vanny DeVito	2019	500	14-Passenger w/lift	\$69,719	\$2,633

Replacement Schedule						
Fiscal Year	Van		Cost of New Van	Additional Related Expenses	Trade in Value	Projected Ending Vehicle Fund Balance *
2020/2021	Skip		N/A		N/A	The Vehicle Fund Balance is under review and may be included in Capital Expense
2021/2022	Skip		N/A		N/A	
2022/2023	Van Wilder		\$75,000		\$5,000	
2023/2024	Vanna White		\$75,000		N/A	

Vehicle Fund Balance FY 2020/2021	\$350
Golf Marathon Revenue 2021/2022	\$8,000
Additional Designated Revenue	\$750
Related Expenses	\$2,135
Trade In	N/A
Vehicle Purchase 2021/2022	\$0
Ending Vehicle Fund Balance 2021/2022	\$6,965

Event Cancelled in 2020/2021

This page intentionally left blank.

Northeast DuPage Special Recreation Association
PDRMA Property/Casualty Program
2021 Member Contributions

	2021	Scheduled* 2020	Dollar Increase (Decrease)	Percent Increase (Decrease)	Debit/Credit Increase (Decrease)
Property	\$13,497.79	\$16,426.34	(\$2,928.55)	-17.83%	12.00
Liability	\$6,585.71	\$7,912.69	(\$1,326.98)	-16.77%	(110.23)
Workers' Compensation	\$4,601.93	\$5,974.67	(\$1,372.74)	-22.98%	19.00
Employment Practices	\$3,109.06	\$3,788.26	(\$679.20)	-17.93%	28.00
Pollution Liability	\$400.44	\$494.34	(\$93.90)	-19.00%	22.82
GRAND TOTAL	\$28,194.93	\$34,596.30	(\$8,024.47)	0.39%	1.62

Analysis of Exposure Increase (Decrease)

Operating Expenditures	\$1,754,081.16	\$2,135,390.00	(\$381,308.84)	-17.86%
Audited Payrolls				
Maintenance Payrolls	\$17,329.37	\$17,087.26	\$242.11	1.42%
Other Payrolls	\$922,440.10	\$1,160,175.83	(\$237,735.73)	-20.49%

Total member contribution increase (decrease) roughly correlates with NEDSRA exposure increase (decrease).

The other factor is the increase (decrease) in the debit/credit which reflects how your loss experience relates to the pool as a whole.

* PDRMA issued rebates to agencies and is reflected in the year-end projected number in the budget document.

This page intentionally left blank.

Expressing Appreciation To Our Governing Board of Trustees



Trustee Jen Hermonson

Trustee Phyllis Schmidt



Trustee Michael Hixenbaugh

Trustee Keith Knautz



Trustee Maryfran Leno

Trustee Paul Friedrichs



Trustee Bruce Baum

Trustee Cathy Fallon



Trustee Barb Cremin

Trustee Greg Gola



WOOD DALE PARK DISTRICT
Active Places. Friendly Faces.

Trustee Matt Ellmann

This page intentionally left blank.

This page intentionally left blank.

Putting People First



NEDSRA
Special Recreation Association

